

SCE Rate Update

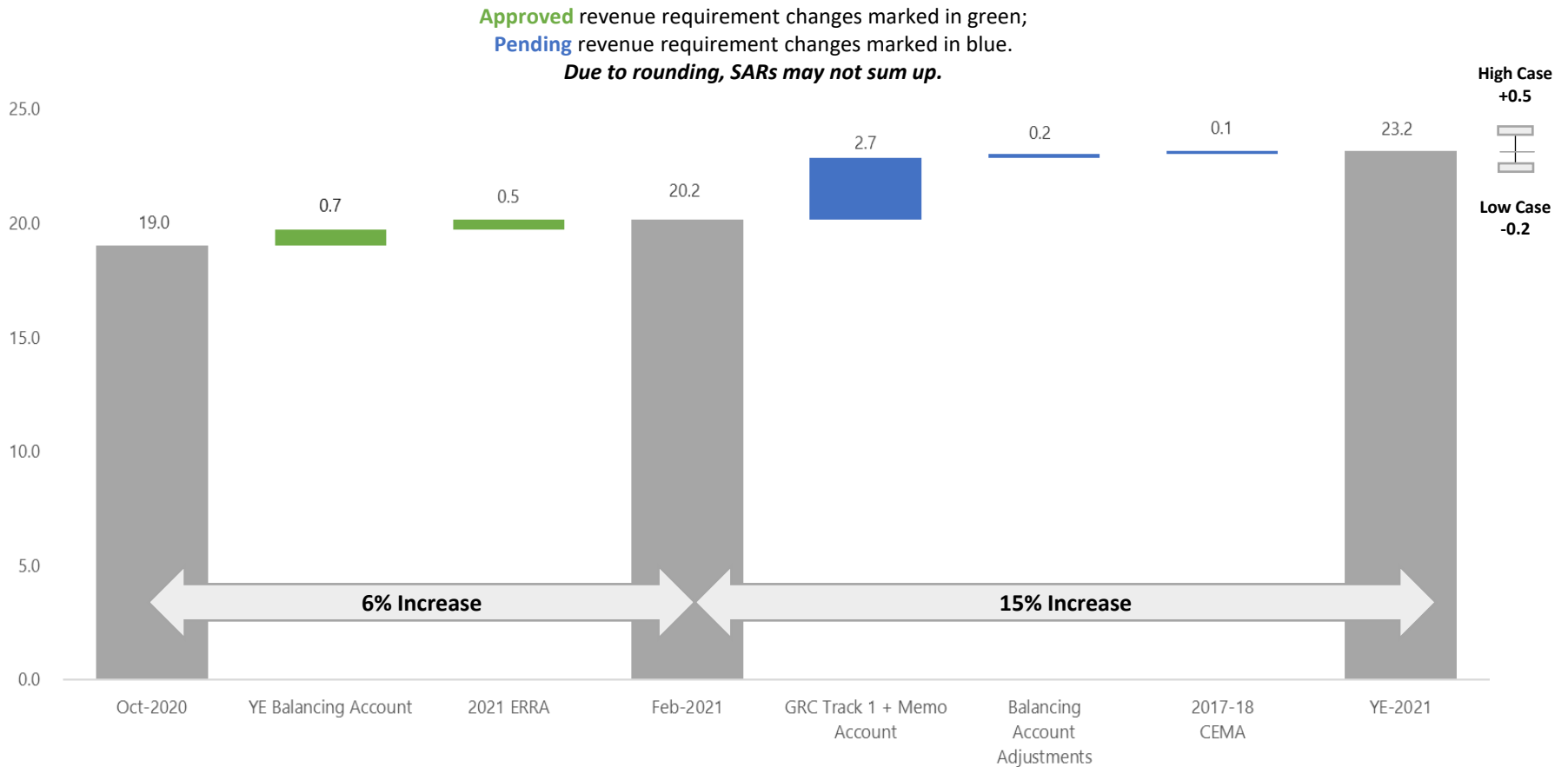
Energy for What's AheadSM



2020-2021 System Average Rate Forecast

- Bundled Service (cents/kWh) | Rate Levels exclude EITE & Climate Dividend

Preliminary rate levels are estimated based on SCE's latest forecast and are subject to change based on future CPUC decisions in various proceedings & market



Key Rate Filings

AB 1054 Securitization

- *Approved and scheduled for June 2021 rate implementation*
- AB 1054 legislation authorizes a new fund to facilitate payment of wildfire-related liabilities from wildfires in 2017 and 2018
- SCE requested authority to finance \$327M of its wildfire-related capital expenditures from 2018-2020 through issuance of recovery bonds
- 2021 revenue requirement increase of approximately \$24M or 0.03 cents/kWh
- This method of financing saves SCE customers about \$53M over 18 years

2021 ERRA Forecast

- *Approved and scheduled for Feb 1, 2021 rate implementation*
- Fuel and purchased power (F&PP) revenue requirement of \$4.53B (\$242.6M less than the 2020 F&PP revenue requirement in rates today) will take effect on Feb 1, 2021.
- A 10% decline in bundled sales results in an increase to the bundled system average rate
- 2021 semi-annual residential California Climate Credit forecasted to be \$29 (reduced from \$37 in 2020)

2021 GRC Phase 1

- *Decision expected Q1/Q2 2021*
- SCE's requests include increase in funding related to reducing the risk of wildfires associated with replacing old equipment and updating our system to avoid outages and prepare for more clean and distributed energy resources in the state

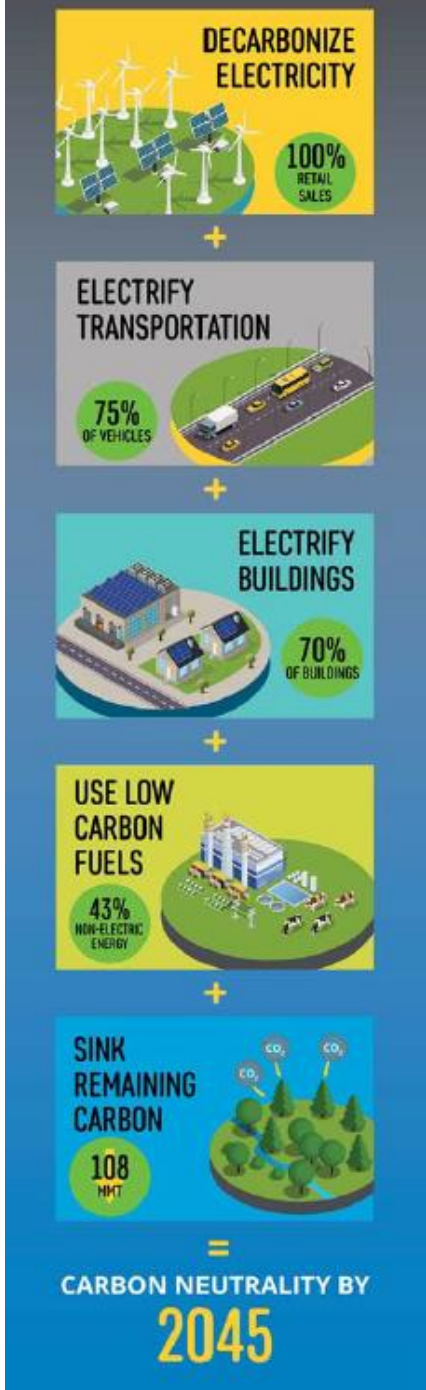
2020-2021 Class Average Rates

- Bundled Service (cents/kWh) | Rate Levels exclude EITE & Climate Dividend

		BUNDLED SERVICE		
		Oct 2020	Feb 2021	% Change (Oct-Feb)
Residential	Domestic	22.2	23.0	3.5%
Small C&I (< 20 kW)	TOU-GS-1	20.2	21.9	8.5%
Traffic Control	TC-1	21.7	23.5	8.3%
Medium C&I (20 kW - 200 kW)	TOU-GS-2	20.3	21.9	7.7%
Medium C&I (200 kW - 500 kW)	TOU-GS-3	18.1	19.6	8.5%
Total Lighting/Small/Medium C&I	Sm. and Medium Comm.	19.8	21.4	8.3%
Large C&I (Sec)	TOU-8-Sec	16.2	17.1	5.8%
Large C&I (Pri)	TOU-8-Pri	14.7	15.4	5.3%
Large C&I (Sub)	TOU-8-Sub	10.0	10.8	8.3%
Total Large C&I	Large Power	14.1	15.0	5.9%
Small Ag & Pump (<200 kW)	TOU-PA-2	17.2	18.5	7.0%
Large Ag & Pump (≥ 200 kW)	TOU-PA-3	14.4	15.7	8.7%
Total Ag & Pumping	Ag. and Pumping	16.0	17.2	7.6%
Total Street & Area Lighting	St. and Area Lighting	19.9	24.0	20.8%
Standby (Sec)	STANDBY/SEC	16.2	16.8	3.5%
Standby (Pri)	STANDBY/PRI	16.2	17.4	7.2%
Standby (Sub)	STANDBY/SUB	10.5	11.0	4.6%
Total Standby	Standby	11.9	12.4	4.5%
Total	Total	19.0	20.2	6.2%

Pathway 2045 Rate Options

SCE Supports California Climate Goals With New Electrification Pathway to 2045*



RESIDENTIAL

- **TOU-D-PRIME**
 - “Whole-House” rate designed for high-energy use households with an EV, residential battery, or heat pump; provides favorable day- and night-time pricing for EV charging

NON-RESIDENTIAL

- **TOU-EV-7 / TOU-EV-8 / TOU-EV-9**
 - Rates designed exclusively for EV charging; features no demand charges during the first five years (from 2019-2023)
- **Option ES**
 - Rate for small business customers with behind-the-meter energy storage
- **Option E**
 - Rate for low-energy use or energy storage customers; recovers more costs via energy charges, with lower demand charges relative to Option D
- **Option D**
 - Rate for high-energy use customers; reflects lower energy charge for high volume customers

*Whitepaper available at <http://edison.com/pathway2045>

Appendix

Energy for What's Ahead[®]



Glossary of Acronyms

AB = Assembly Bill

BIP = Base Interruptible Program

CEMA = Catastrophic Event Memorandum Account

CBP = Capacity Bidding Program

CPUC/Commission = California Public Utilities Commission

D = Decision

DR = Demand Response

EITE = Emissions Intensive and Trade Exposed

ELRP = Emergency Load Reduction Program

ERRA = Energy Resource Recovery Account

FERC = Federal Energy Regulatory Commission

GRC = General Rate Case

GSRP = Grid Safety & Resiliency Program

kWh = kilowatt hour

OIR = Order Instituting Rulemaking

R = Resolution

SAR = System Average Rate

SCE = Southern California Edison

SDP = Summer Discount Program

SEP = Summer Energy Program

TOU = Time of Use

WEMA = Wildfire Expense Memorandum Account

YE = Year-End